

# Large In-Clinic Installation Requirements:

## Installation for a Windows Networked Computer:

CNS Vital Signs applications are designed to work equally well with non-networked e.g., small and medium practices, networked e.g., hospitals, integrated multi-clinic and large practices, as well as strict firewall secure environments e.g., Military, VA Medical Centers.

### Very Important:

If you are in a NETWORKED ENVIRONMENT where Windows Administrators, Users, and Permissions are involved. Here are the steps to avoid issues when installing and using CNS Vital Signs testing platform on a PC with Administrator and User permissions:

### Log on as an Administrator – install only:

1. Log-in as an Administrator
  - a) Install CNS VS LOCAL App as an ADMIN
  - b) Avoid opening the Application**
  - c) Best Practices are to open and use CNS VS only as a Windows USER
2. Log-off as ADMIN.

### Log-on as a USER:

1. Open up the CNSVS LOCAL App from the USER side. This will set the permissions
2. Check to confirm the number of remaining assessments, new installs should have 5 test sessions
3. Shut down the machine
4. Boot up the machine, log-in as the USER
5. Check to confirm the # of assessments remains the same
6. Begin Testing

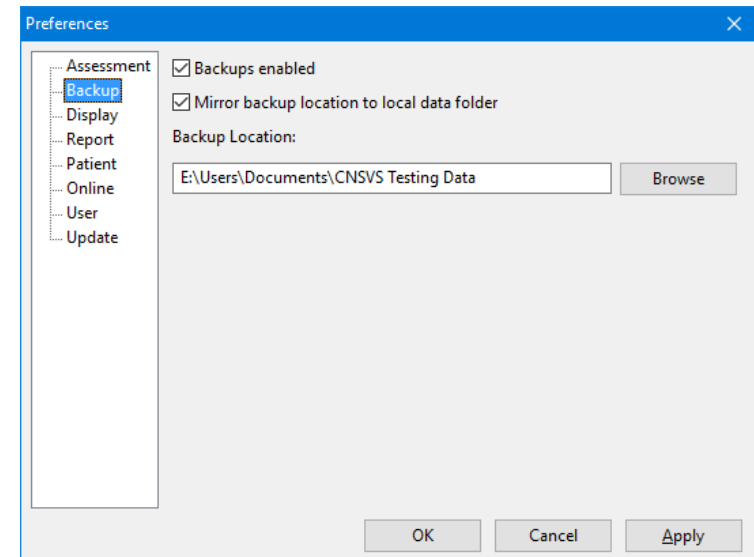
### Important:

CNS Vital Signs best practices is to Open, Test, Print, Graph, etc. from the Windows USER log-on. Avoid launching the App from both the ADMIN and USER log-ins.

**Backing-up Reports:** The Local software application stores the testing reports locally on the computer's hard drive and the testing data can be backed up to the clinics network servers.

The Local software app(s) via multiple testing stations can be synced to a clinics network server or the reports can be securely synced to the CNS VS Account. The testing data can be easily backed-up by

- First, establish a CNSVS Testing Data file on the clinics servers.
- Second, opening the Local Software App > SELECT 'MENU' > Preferences > Backup > Check the 2 boxes and SELECT the Browse button to map the data back-up the CNSVS Testing Data file on the clinics servers.



**Printing Reports:** CNSVS VS4 assessments produce reports that can be printed on most standard PC or network printers. The report will display in your web browser or as a PDF for your printing convenience. If you want the report in color or if the Report extends beyond one page, check the color box or change the margins in Page Setup. (File>Page Setup) in your browser.